

## SC1 MIDI EDITOR GUIDE



Thank you for purchasing the SC1 Midi Foot Controller and the SC1 Midi Editor. The SC1 Midi Editor will enable you to program and edit every feature on the SC1 from your home computer or laptop. This will make programming and editing so much easier and faster, and will also give you a great media for backups.

### **Any Extensions ?**

On the front page you tell the Midi Editor if your SC1 has any Extensions connected.

<input type="checkbox"/> I have the Extension Std. with additional 3 presets and 6 direct access switches
<input type="checkbox"/> I have the Extension Plus with additional 9 direct access switches

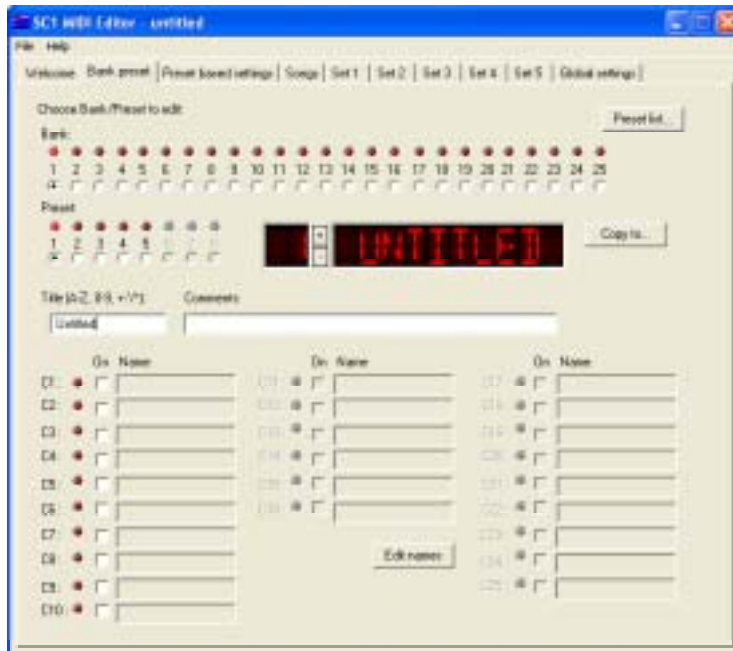
If you i.e. have the Extensions Standard, click on the top row.

<input checked="" type="checkbox"/> I have the Extension Std. with additional 3 presets and 6 direct access switches
<input type="checkbox"/> I have the Extension Plus with additional 9 direct access switches

The Midi Editor will now "open" the additional features of the Extension Standard.

## BANK/PRESET page

---



The BANK/PRESET page will give you the following features:

**1. Decide what bank/preset you will be editing**

Simply click on the Bank/preset LED's for entering a specific Bank/preset. The Bank can also be selected by using the +/- located between the Bank No. and the Preset title.

**2. Title your preset**

Place the cursor in this field and simply type the name of your preset.

The following letters/signs are available:

**A-Z, 0-9, +, -, ', /, \***

**3. Make additional comments for each preset**

Next to the title field there's a field named "Comments". This is intended to be a personal notebook for any additional comments to a specific presets.

**4. Enable/disable the individual direct access switches (C1 thru C25).**

Click the ON field next the LED of the direct access switch you want to activate.

When the switch is ON the LED will be lit.

If some of the direct access switches are "grey" it means that you have told the Midi Editor that you do not have the Extension related to these functions, and therefore you can not edit these switches.

**5. Give each direct access switch a name.**

Click the EDIT NAMES button. The NAME fields to the right of each direct access switch will now turn from grey to white. The EDIT NAMES button will now say STORE NAMES.

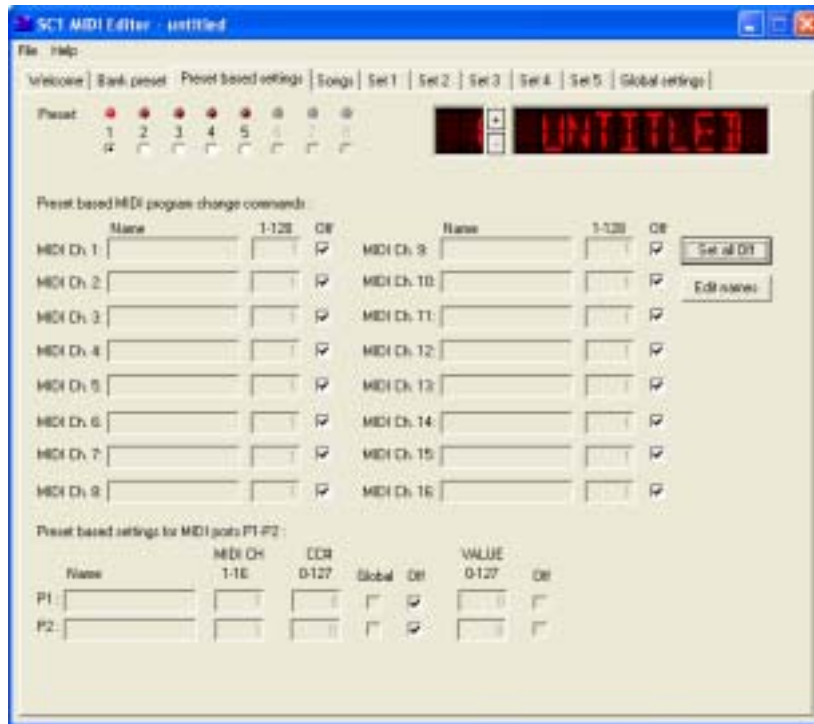
You can now type the name of unit that is controlled. When you are done press the STORE NAMES button and the titles are now stored.

On the picture below I have shown an example of this.

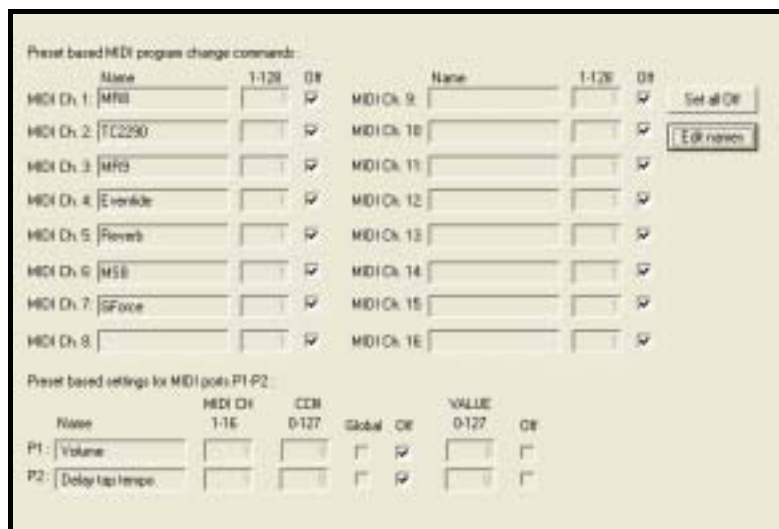


# PRESET BASED SETTINGS page

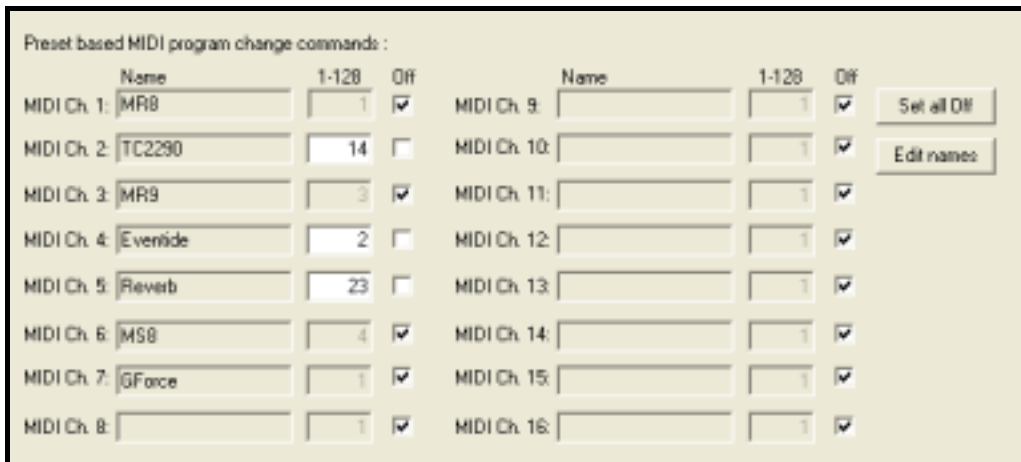
Preset based setting is where you program the individual Midi Program Change commands for each bank/preset, and the preset basic settings for the Midi Ports P1 and P2.



Just like you named your direct access switches on the Bank/Preset page, you can now enter the names of the units you control by Midi, and the two control ports to provide the best possible overview over your system. This will make it a lot easier when you don't have to "remember" what unit is set to Midi Channel 1 etc. Here you have direct view of all your units. Could be something like this:

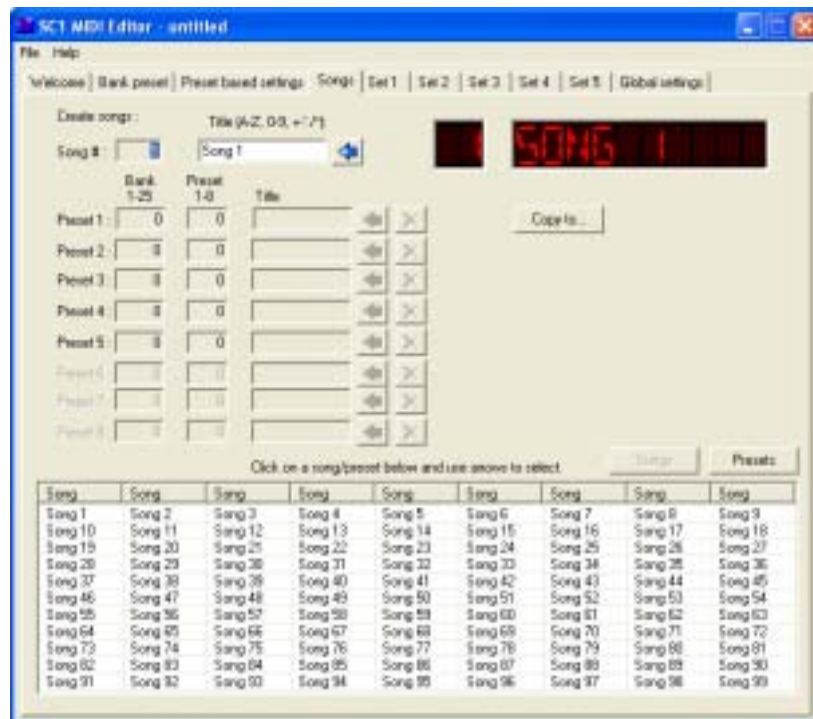


When you want to program any Midi Program Change commands, just remove the mark in the OFF box, and the blank field on the left will turn white. You can now enter the command for this specific Midi channel. Here's an example:



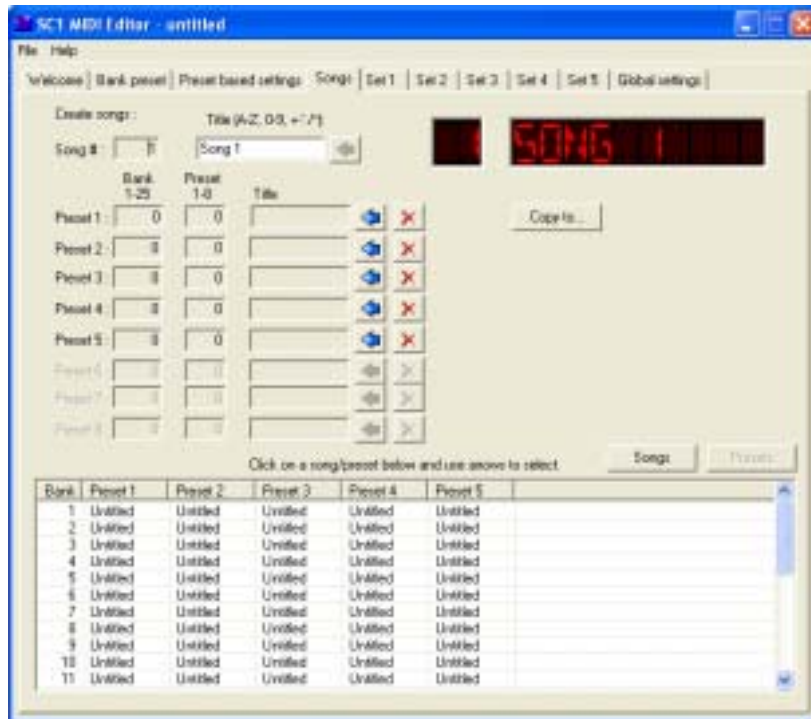
The same applies for the P1/P2 ports.

## SONGS page



This is where you program your 99 songs. You can give each song a dedicated title, and you can program the preset combination you require.

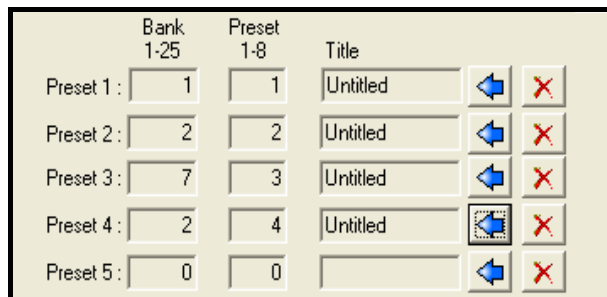
Song 1 will be ready as default. Now you should add the preset combination. At the bottom of the page the list of songs are shown. Press the PRESETS button above the song list.



You will now have access to all your presets. When you have decided which preset should be your first "song-preset" click on that preset within the list. The chosen preset will be gray.

Bank	Preset 1	Preset 2	Preset 3
1	Untitled	Untitled	Untitled
2	Untitled	Untitled	Untitled
3	Untitled	Untitled	Untitled
4	Untitled	Untitled	Untitled
5	Untitled	Untitled	Untitled
6	Untitled	Untitled	Untitled
7	Untitled	Untitled	Untitled
8	Untitled	Untitled	Untitled
9	Untitled	Untitled	Untitled
10	Untitled	Untitled	Untitled
11	Untitled	Untitled	Untitled

Press the blue arrow on the right side of preset 1. If you want to remove the preset again, press the red X.



When you are done programming Song 1, press the SONGS button above the preset list.

When choosing a Song, simply click on the song number or title, and press the blue arrow located right next to the title area on top of the page.

Song	Song	Song	Song	Song
Song 1	Song 2	Song 3	Song 4	Song 5
Song 10	Song 11	Song 12	Song 13	Song 14
Song 19	Song 20	Song 21	Song 22	Song 23
Song 28	Song 29	Song 30	Song 31	Song 32
Song 37	Song 38	Song 39	Song 40	Song 41
Song 46	Song 47	Song 48	Song 49	Song 50
Song 55	Song 56	Song 57	Song 58	Song 59
Song 64	Song 65	Song 66	Song 67	Song 68
Song 73	Song 74	Song 75	Song 76	Song 77
Song 82	Song 83	Song 84	Song 85	Song 86
Song 91	Song 92	Song 93	Song 94	Song 95

Create songs :      Title (A-Z, 0-9, +',/):

Song # :                                      

With the COPY TO function, you can copy an entire song to a specific location.

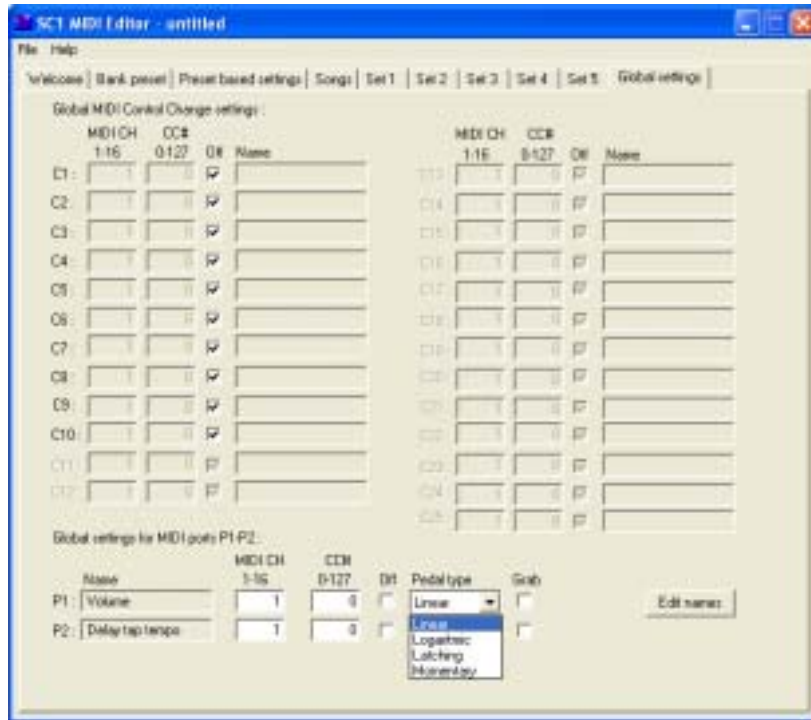
## SET 1 thru 5 page

---

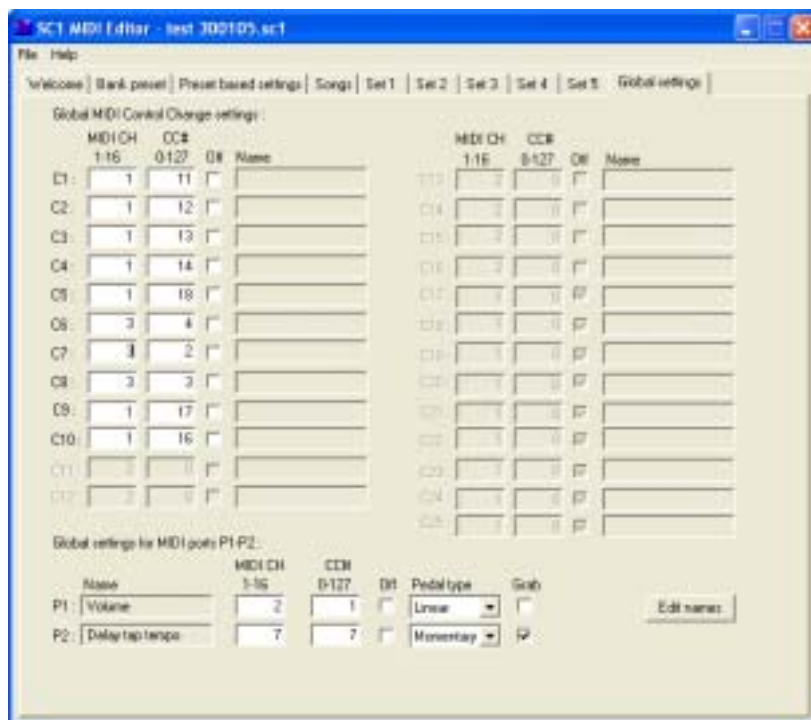
- Same procedure as programming Songs.
- "COPY TO..." enables you to copy the entire set list.
- "PRINT..." enables you to have a print out of the Set list.

# GLOBAL SETTINGS page

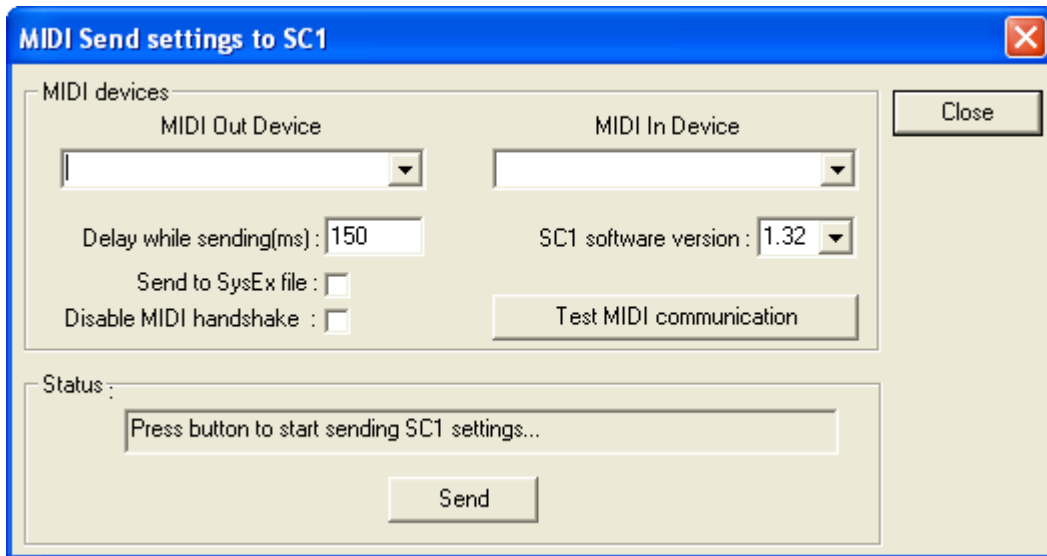
Enter your global settings and names for each of your direct access switches and for the Midi Ports P1 and P2.



Could look something like this:

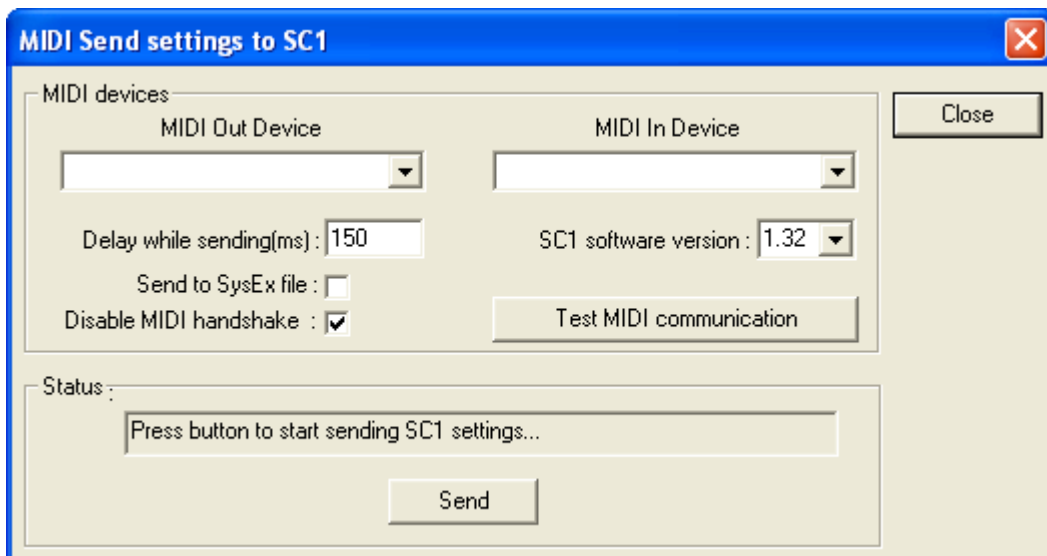


When you are ready to send the settings to your SC1, enter the FILE menu – top left corner. Under MIDI UPDATE choose “Send settings ...”



Your Midi IN and Midi Out device should show here. If not, you may have a driver problem between the Interface device and Windows.

Before every transmission the Midi Editor makes sure that there is communication between your computer and the SC1. This may takes a few seconds, and if want to avoid this delay, disable Midi Handshake. Also, the Midi Test will fail if you have a software version lower than 1.32 in your SC1. To be able to dump the data into the SC1 you need to disable Midi Handshake.



“Test Midi Communication” is for verifying proper communication between your computer and the SC1.

To upload the settings from your SC1 to the Midi Editor, choose “Receive settings ...” under FILE\MIDI UPDATE.

If you want to install the SC1 Midi Editor on a second computer or laptop, all Midi settings and names can be exported in the FILE\SETUP menu.

For proper communication with the SC1, it is required that your SC1 has software version 1.32 or higher.  
If your SC1 needs a software update, go to [www.skrydstrup.com](http://www.skrydstrup.com) and download the latest software revision.